

Part List Per Kit

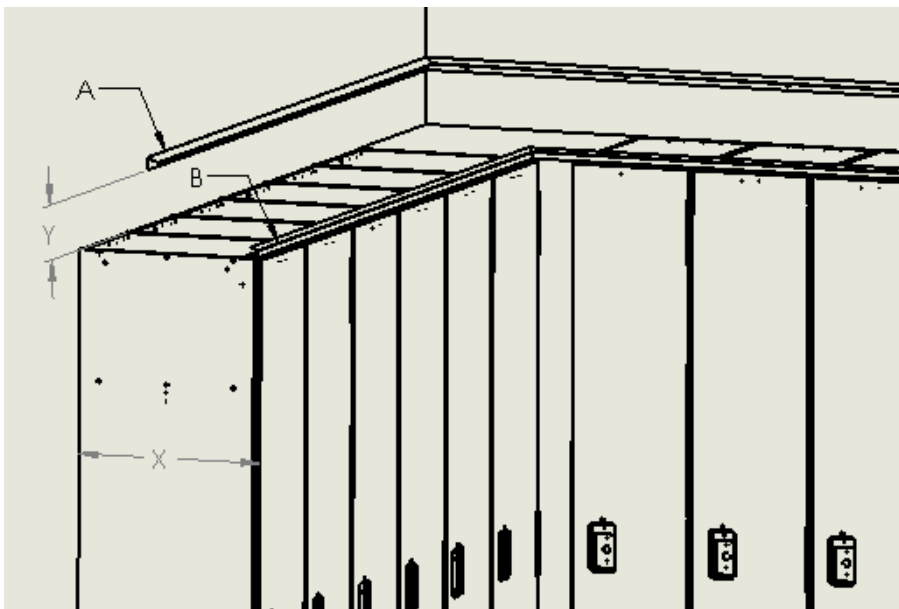
Part	Part #	Description	Qty.
A	11-5432720	Back Support Bracket	2
B	11-5431720	Front Support Bracket	2
C	65-19555	#10 -3/8" F-type Screw	14
D	40-3918451	#12 -2.5" Screw	10
E	40-3081000	#12 Shields	10
F1	65-22607P-72L	Phenolic Slope Top LH	1
F2	65-22607P-72R	Phenolic Slope Top RH	1
*	65-19565	Drill Bit #19 (.165" dia.)	1

Recommended Tools:

T25 torx bit, T27 pin torx bit, .165" drill bit (Included), Miter Saw, Cordless Drill & Chalk Line

Step 1

- Measure run of lockers to determine if cuts are required for the back (A) and the front (B) support brackets.
- Inside corners should be mitered @45 deg. angles on support brackets (A & B).
- Make a mark above the lockers on each end of the run at the appropriate height.
Recommended to use a chalk line to supply a straight reference for the back support
- Refer to chart for back (**Y**) **Support Bracket Placement**.
- Placement varies based on (**X**) **Locker Depth**.



X	Y
12"	2 – 15/16"
15"	4"
18"	5 – 1/8"

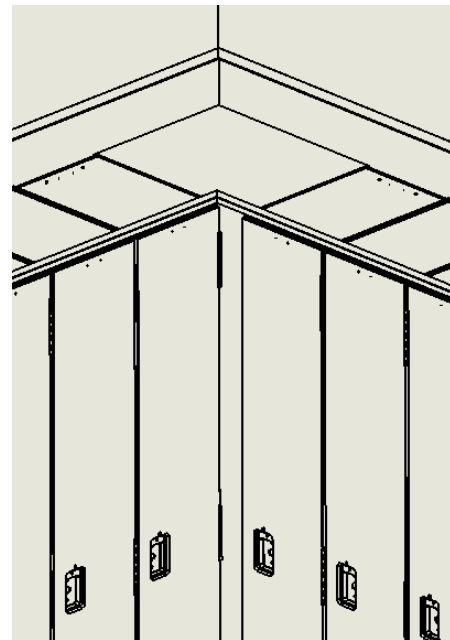
Step 2

- Install the back (A) and front (B) supports using the supplied fasteners (C & D)
- The aluminum supports should be cut to required length to finish the run. Supports should cover the entire length of the lockers and not protrude past the locker sides.

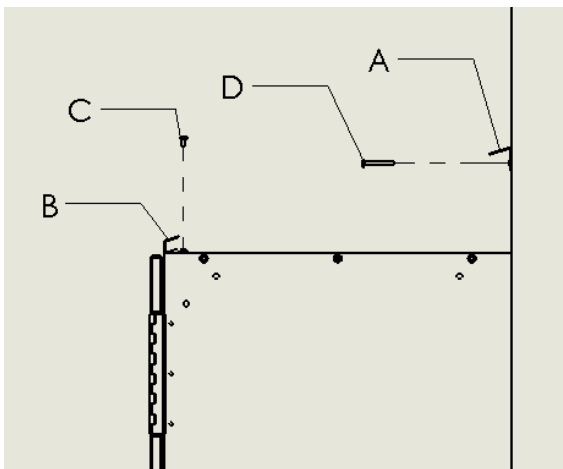
Pre-drill holes using the supplied #19 drill bit .165" dia. x .44" deep in the locker top to accept screws(C)

Size and depth of pre-drill for screws (D) to be determined by what material it is being fastened to. May require shields (included in kit, installers preference).

Front View



Side View



CAUTION

Be careful not to drill into the sides of the the locker when installing extrusions. Drill new holes in extrusion, if it falls on the seam.

Do not over-tighten screws

Step 3

- Team lift the left hand slope top (F1) above the supports. Lower the front (flat) edge into support (B).
- Lower the back (angled) edge of the slope top to rest on the back-aluminum support (A)
- Repeat with the right hand slope top (F2)
- Continue to place all full length slope tops until cuts are required to finish run.

